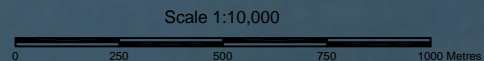
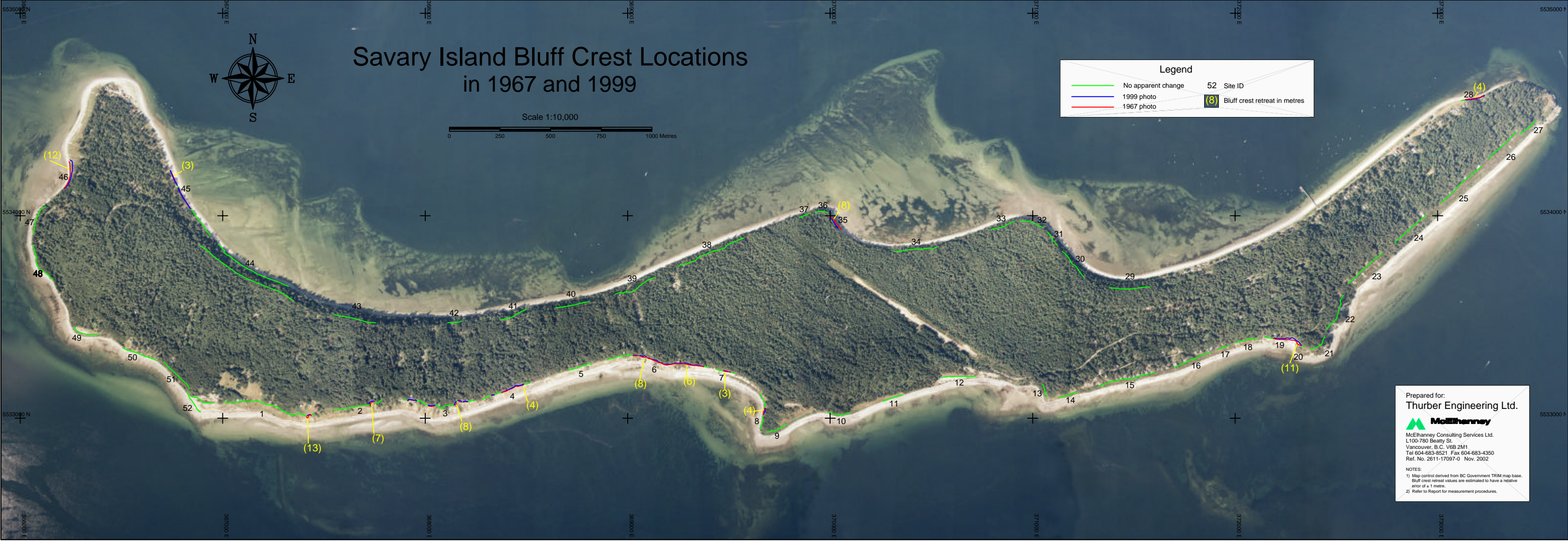


Savary Island Bluff Crest Locations in 1967 and 1999



| Legend | |
|---|-----------------------------------|
| — No apparent change | 52 Site ID |
| — 1999 photo | (8) Bluff crest retreat in metres |
| — 1967 photo | |



Prepared for:
Thurber Engineering Ltd.

McElhanney
McElhanney Consulting Services Ltd.
1100-780 Beatty St.
Vancouver, B.C. V6B 2M1
Tel 604-683-8521 Fax 604-683-4350
Ref. No. 2611-17097-0 Nov. 2002

NOTES:
1) Map control derived from BC Government TRIM map base. Bluff crest retreat values are estimated to have a relative error of ± 1 metre.
2) Refer to Report for measurement procedures.