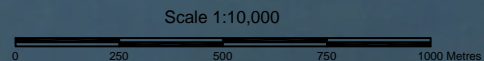
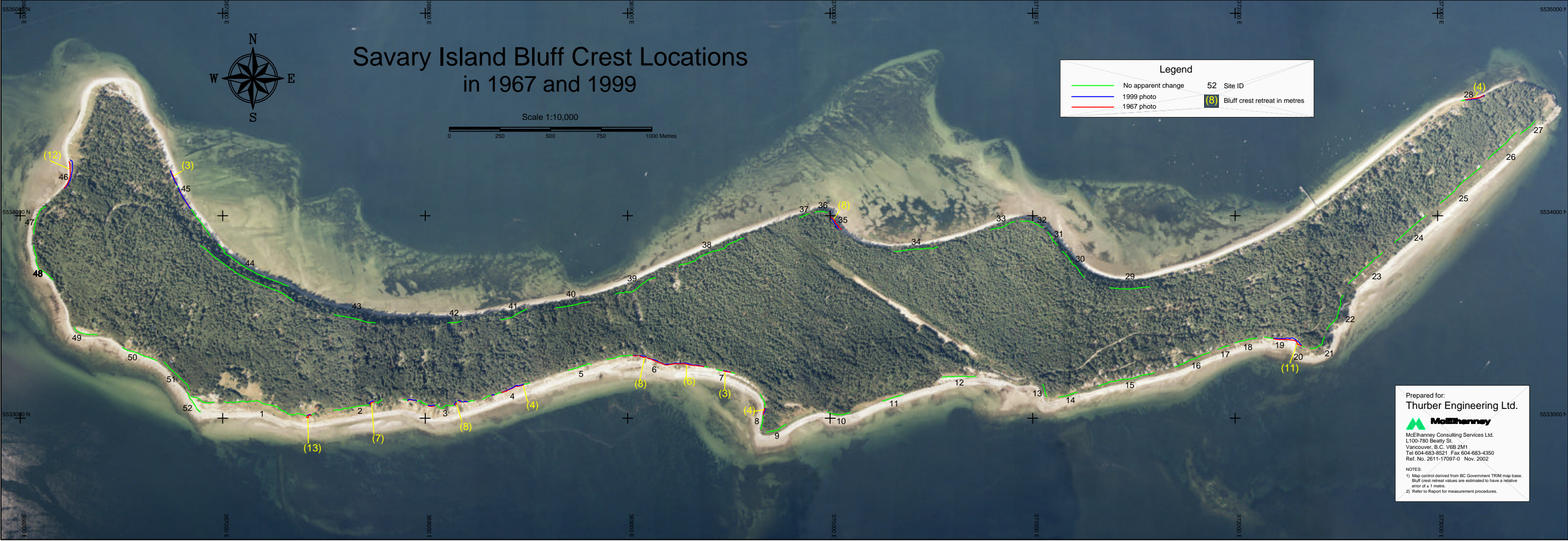


# Savary Island Bluff Crest Locations in 1967 and 1999



| Legend  |                                   |
|---|-----------------------------------|
| <span style="color: green;">—</span> No apparent change | 52 Site ID                        |
| <span style="color: blue;">—</span> 1999 photo          | (8) Bluff crest retreat in metres |
| <span style="color: red;">—</span> 1967 photo           |                                   |



Prepared for:  
**Thurber Engineering Ltd.**

**McElhanney**  
McElhanney Consulting Services Ltd.  
1100-780 Beatty St.  
Vancouver, B.C. V6B 2M1  
Tel 604-683-8521 Fax 604-683-4350  
Ref. No. 2611-17097-0 Nov. 2002

NOTES:  
1) Map control derived from BC Government TRIM map base. Bluff crest retreat values are estimated to have a relative error of ± 1 metre.  
2) Refer to Report for measurement procedures.